



MKE mini

PRESENTER MICROPHONE

Quick Guide

Kurzanleitung

Guide de démarrage rapide

Guida rapida

Instrucciones resumidas

Instruções resumidas

Beknopte gebruiksaanwijzing

Krótką instrukcja obsługi

Snabbguide

Kort vejledning

Pikaohje

Σύντομες οδηγίες

Kısa Kılavuz

Краткая инструкция

快速指南

快速使用指南

クイックガイド

요약 안내서

SENNHEISER



Sennheiser electronic GmbH & Co. KG

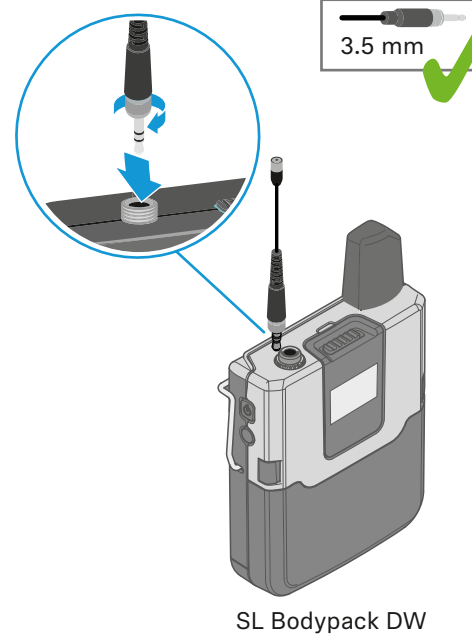
Am Labor 1, 30900 Wedemark, Germany
www.sennheiser.com

Publ. 06/22, 597200/A01

In the box



Setup



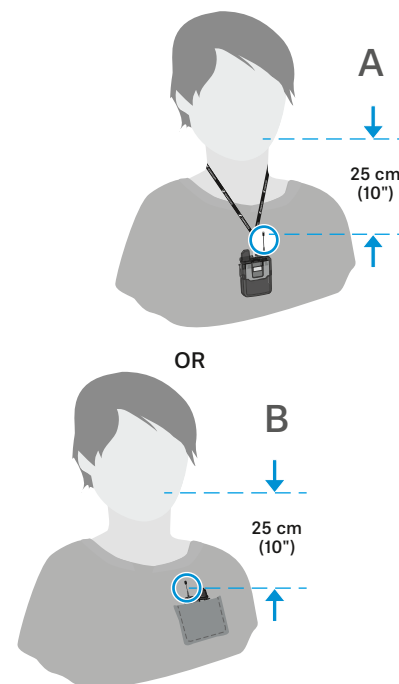
OR

EW-D SK / EW-DX SK

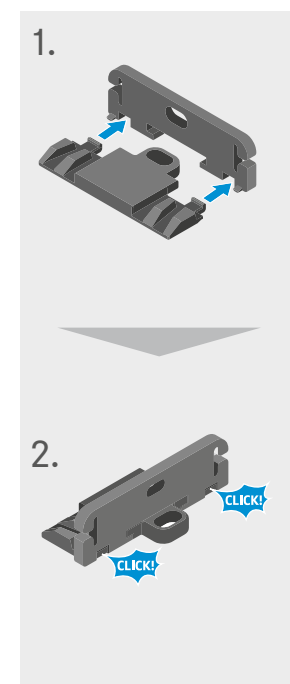


SK 100/300/500 G4 (G3)

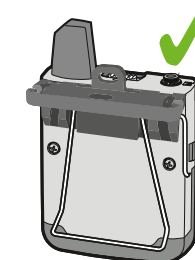
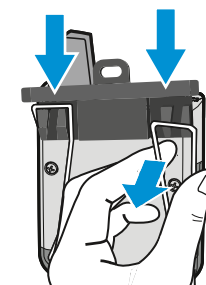
Wearing the microphone



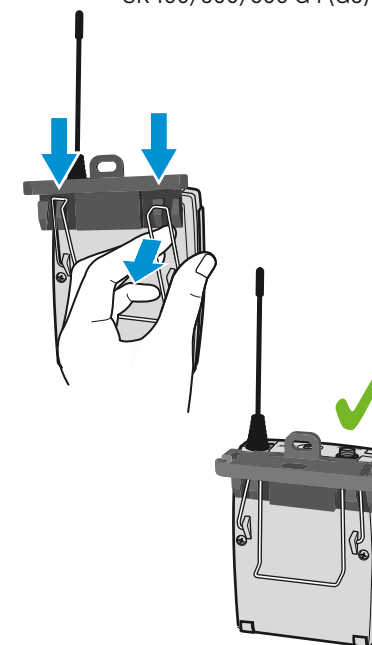
Setup



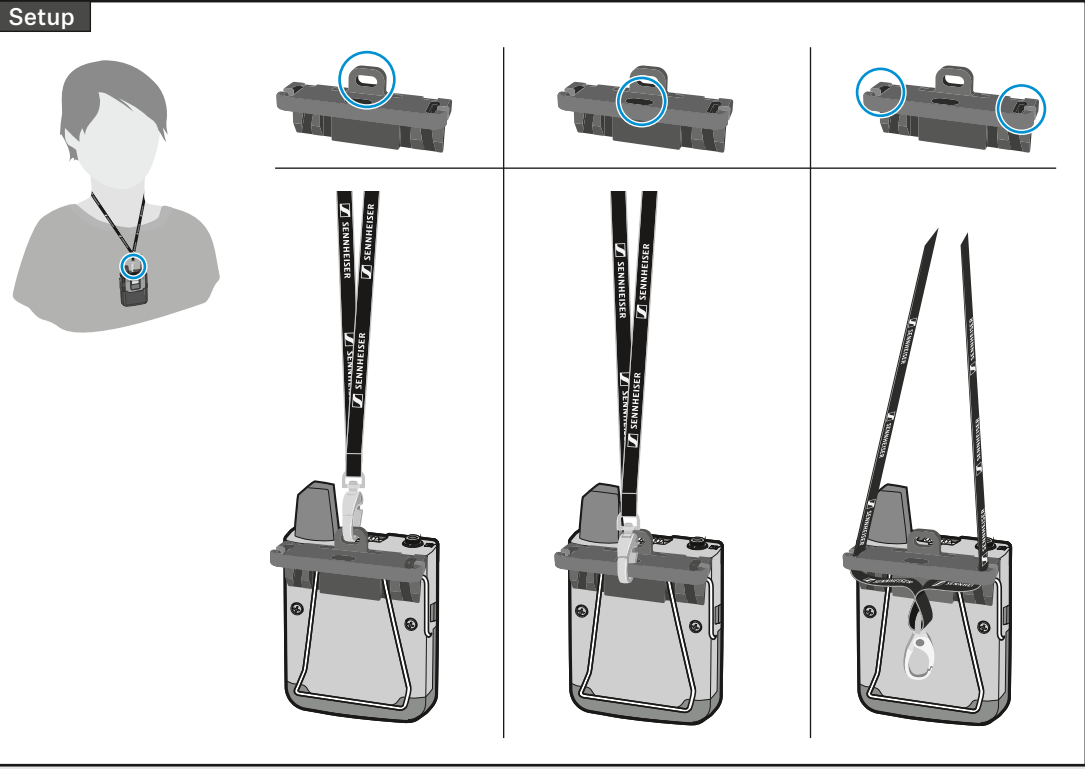
SL Bodypack DW
EW-D SK / EW-DX SK



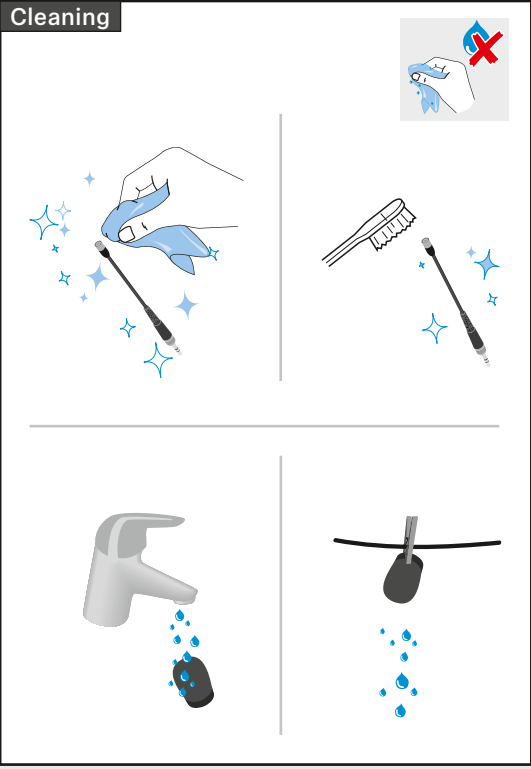
SK 100/300/500 G4 (G3)



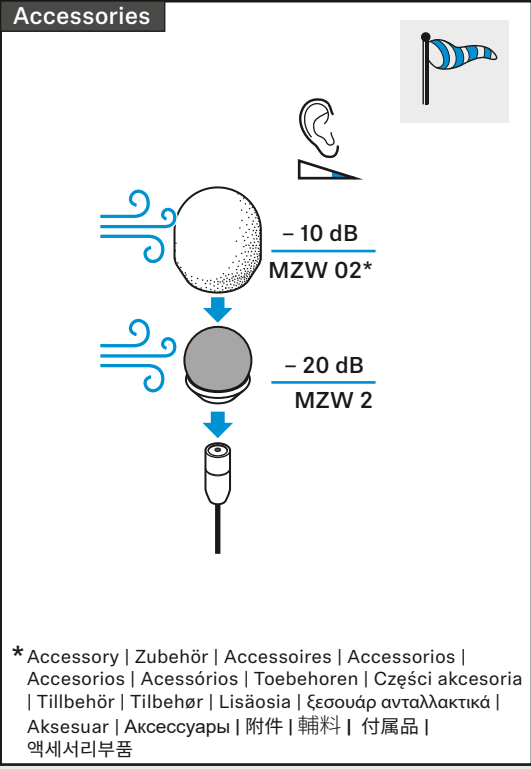
Setup



Cleaning



Accessories

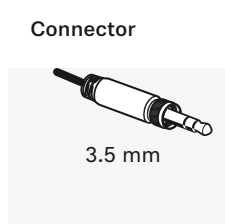


* Accessory | Zubehör | Accessoires | Accesorios |
Accesorios | Acessórios | Toebehoren | Części akcesoria
| Tillbehör | Tilbehør | Lisäosia | ξεσουάρ ανταλλακτικά |
Aksesuar | Аксессуары | 附件 | 輔料 | 付属品 |
액세서리부품

Specifications

Pick-up pattern	omni-directional
Sensitivity in free field (1 kHz)	5 mV/Pa \pm 2.5 dB
Max. SPL at 1 kHz	140 dB
Frequency response	20 to 20,000 Hz
Equivalent noise level A-weighted	28 dB
Connector	3.5 mm jack
Total length	90 mm
Supply voltage	7.5 V
Diameter of microphone	4.8 mm
Compatible with	ew G3/ew G4/EW-D/EW-DX/SL DW

Connector

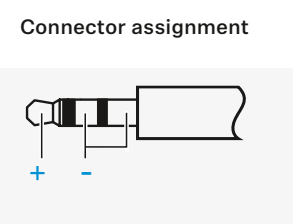


3.5 mm

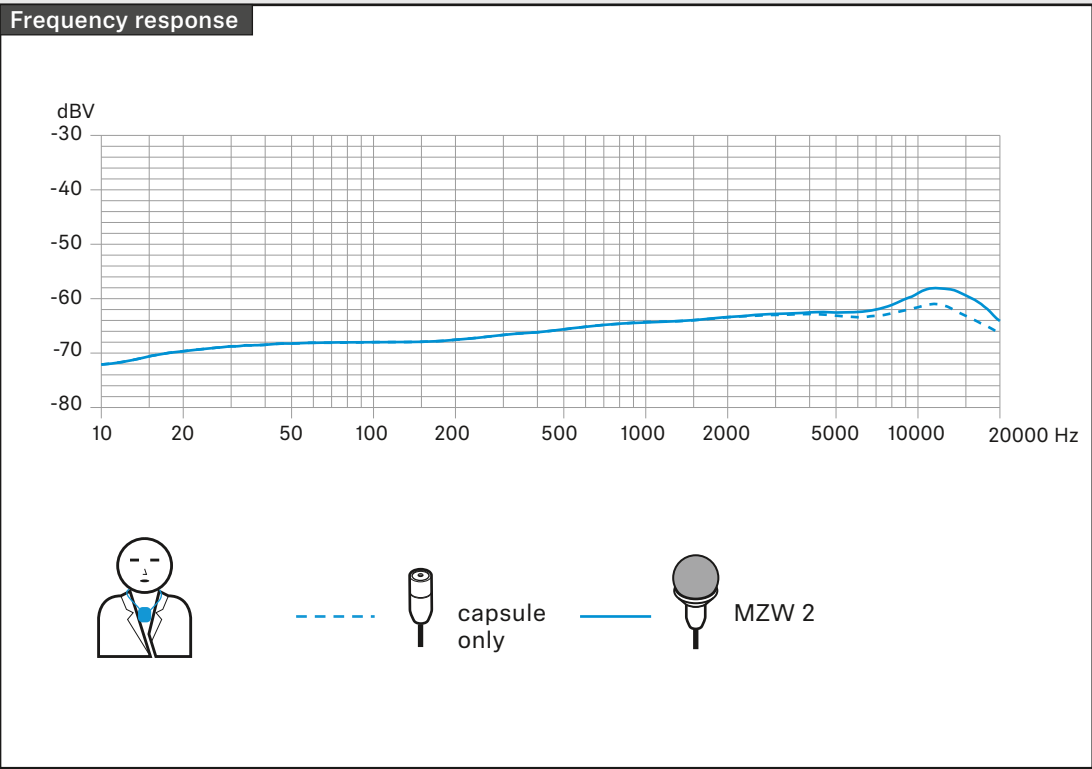
Applicable to


ew G3/ew G4/
EW-D/EW-DX/SL DW

Connector assignment



Frequency response





capsule only

MZW 2